

Ceaser Install/Update



Thank you for Choosing Ceaser as your preferred Survey Controller Software.

- Go to the Ceaser website (<http://ceaser.co.za>), Downloads section
- Complete the required information and click the Continue button.

- You will then receive a link in your mail that looks something like this.
- Click on the link and your Setup file will be downloaded.
- You will now have a .zip file
- Extract the Installer from the .Zip File.

CEASER Technologies Download System

CEASER <no-reply@ceaser.co.za>

Sent: Thu 19-Feb-15 3:11 PM

To: support@surveyinstruments.co.za

Dear JesseTEST,

Here is the download for [CEASER Field](#) that you requested.

The provided link will be valid for 1 week.
Please do not replay to this email.

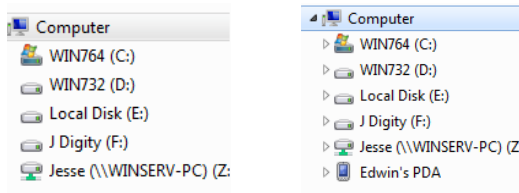
Sincerely,
CEASER Technologies
support@ceaser.co.za | www.ceaser.co.za
+27 10 500 7907 | +27 21 300 8319

Make sure you have Windows Mobile Device Center 6.1 or later([Links at bottom of PDF](#))

Now that you have all the files you need.

******* MAKE SURE Ceaser is Closed on your Handheld/TotalStation.*******

Plug in your handheld to your computer and make sure it has established a connection (you can verify this by checking if your devices shows up under My Computer)



Before Connecting

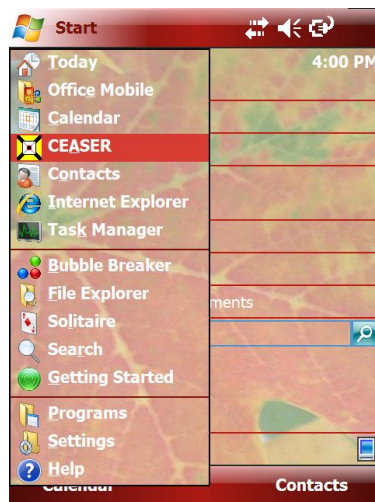
After connecting

Double click on the Installer and complete any actions required on your Computer, while also observing for any messages that might appear on your Unit. (eg. "Would you Like to Install Ceaser?", Click Yes)

To Open Ceaser :

Click on the Ceaser Icon from your Start Menu or Home Page of your device,

Alternatively ***Start > Programs > CEASER***





To License your unit:

Once Ceaser has been installed, open the program and "Click" the **<Continue>** Button. From the main menu in the program, select **<About>** and then **<Reg>**.



Send your Hardware ID to info@ceaser.co.za, along with which licenses you would like to purchase.

Example:

"To Ceaser

Please Register my GetacPS236 S/N GTC42061 with the Hardware ID number 7C56-C969-B171 for Total Station and GPS activations.

Thanks

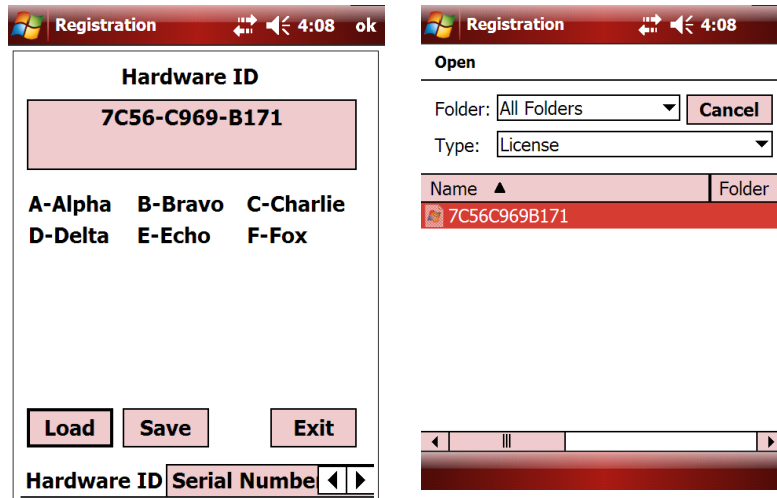
John Hopkins"

A license file will then be sent to you. Eg. "7C56C969B171.Lic"

Once you have received your file, copy it to your device under the "My Documents" folder.

From the Main menu of Ceaser Click <About> and then <Reg>

Click <Load> and then click on your license file.



*******Congratulations you have now Installed and Registered your Ceaser Program *******

Links to Software:

Ceaser Downloads Page http://ceaser.co.za/?page_id=4276

Archive extraction software <http://www.7-zip.org/>

Windows Mobile Device Center 6.1(32-bit) <http://www.microsoft.com/en-za/download/details.aspx?id=14>

Windows Mobile Device Center 6.1(64-bit) <http://www.microsoft.com/en-za/download/details.aspx?id=3182>